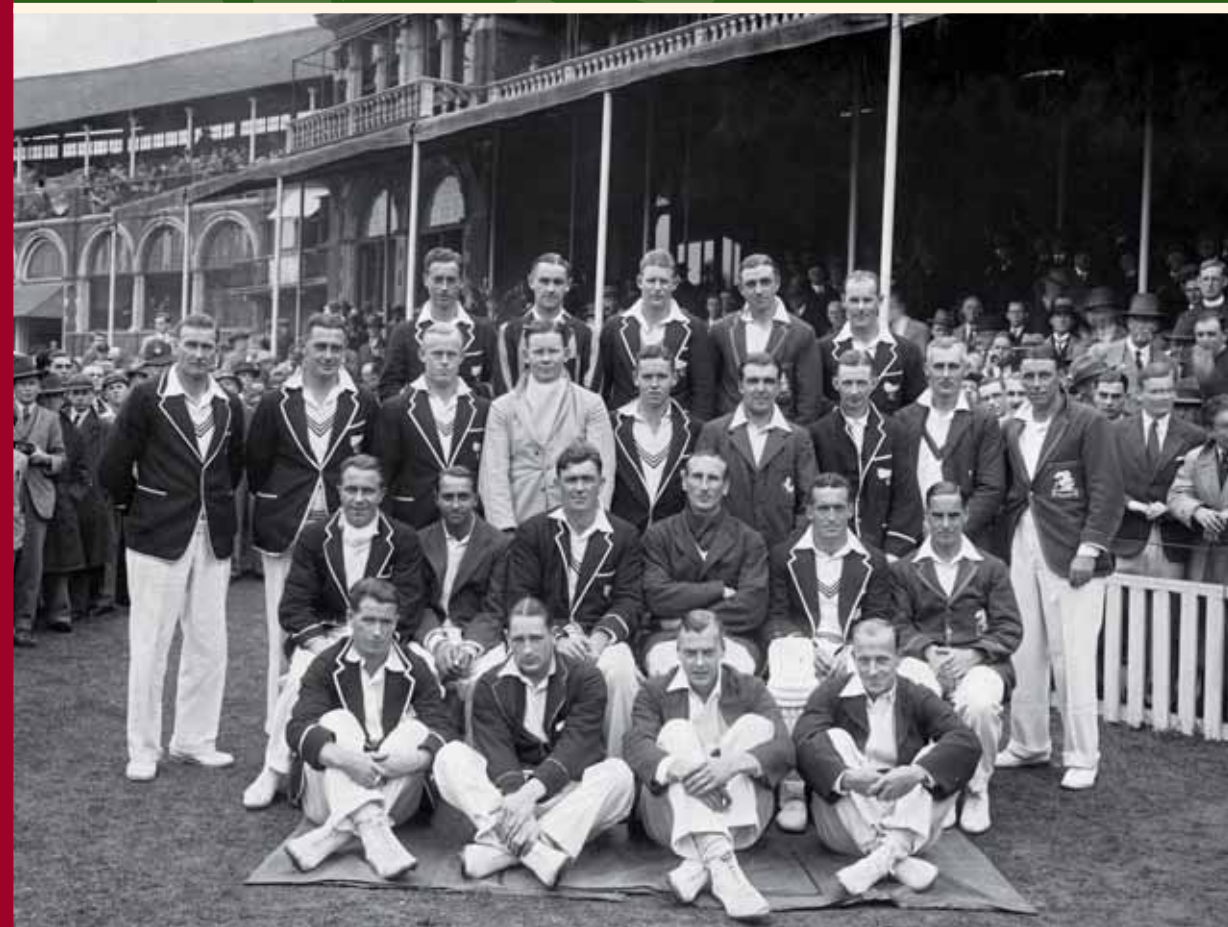


NEW ZEALAND CRICKET MUSEUM



England and New Zealand Test Teams
New Zealand v. England (Second Test), The Oval, England, 29-31 July 1931

Back: R. C. Blunt, G. O. B. Allen, J. L. Kerr, W. R. Hammond, G. L. Weir
Third Row: C. F. W. Allcott, I. B. Cromb, R. O. Talbot, F. R. Brown, H. G. Vivian, L. E. G. Ames, J. E. Mills, H. Verity, M. W. Tait
Second Row: K. C. James, K. S. Duleepsinhji, T. S. Lowry (N.Z. Captain), D. R. Jardine (England Captain), M. L. Page, H. Sutcliffe
Front: W. E. Merritt, A. H. Bakewell, I. A. R. Peables, R. J. Gregory (the England 12th man)

Photo: Unknown
Photography Collection, NZCM. Accession No. 97/100

Winter/Spring Newsletter 2006

EDUCATION

Education Groups

The target of 25 education group visits was achieved in the 2005/06 financial year. This included primary, intermediate, secondary and tertiary students, as well as Rest Home residents.

Open Day

The 2nd museum Open Day held on the 26 February 2006, and organised in partnership with the Wellington Museums Trust and the Colonial Cottage Museum, was very successful with 139 visitors to the museum. A wide range of activities were held, including tours of the museum and visits to the Long Room in the R.A. Vance Stand, plus in-door net practise for young cricketers under the Vance Stand. Refreshments were available to mimic the cricketers' "drinks break" and museum volunteers were on hand to support the occasion.

Public Programmes

A public programme on Chris Cairns' career up to 2002 was presented in early April by Hamish McDouall, based on his book "Chris Cairns", published in 2002. This programme was timetabled soon after the retirement of Chris Cairns from international cricket, so it was disappointing there was such a small attendance. Unfortunately, it would appear that Cricket Wellington members and cricket lovers generally are not particularly interested in the public programmes organised by the museum over the last two years, because attendances have been unsatisfactorily low. The continuation of these programmes will need to be reassessed in 2006/07.

"Celebrate two for free!"
Colour Flyer for Museum Open Day 26.02.2006
New Zealand Cricket Museum Archives

Wellington Cricket Age-Group Team Visits

Also, it was very disappointing that the plan to have organised visits by Wellington age-group teams, including the *Firebirds* and the *Blaze* teams, never materialised over the summer months, through no fault of the museum.

We hope these visits can be re-scheduled this coming summer.

Celebrate two for free!

Sunday February 26 10am to 4pm

Two unique Wellington facilities are offering a special family day out this Sunday. There's a feast of free activities, and entry fees are waived for the day.

New Zealand Cricket Museum at the Basin Reserve is based in the Old Grandstand and houses a wealth of national cricket treasures and archive material.

- Tours of the museum and of the historic plaques around the Basin Reserve perimeter
- Visit the Long Room in the RA Vance Stand
- New displays: the origins of cricket, and New Zealand cricket in the 1970s and 1980s
- Activities for young cricketers at the indoor nets from 1pm to 4pm
- Enjoy a drinks break – refreshments available

Colonial Cottage Museum, 68 Nairn Street, was built in 1858 and is central Wellington's oldest identified building. It has been preserved and furnished to provide visitors with an experience of mid 19th century living.

- Garden tours with Hannah Zwart at 1pm and 3pm
- Devonshire teas
- Spinners, embroiderers and other craftspeople in action
- Artist in residence, old-time music
- Children's activities from the period
- Pikelets on the coal range

Colonial Cottage Museum
68 Nairn Street ph 384 9122
www.colonialcottage-museum.co.nz
New Zealand Cricket Museum
Basin Reserve ph 355 6602
www.nzcricket.co.nz (follow the link)



VISITS TO THE MUSEUM

The Old Grandstand, Basin Reserve, Wellington

Public Hours

Summer Season: 10.30 – 3.30pm Monday to Sunday and all match days i.e. 01 November to 30 April.

Winter Season: 10.30 – 3.30pm Weekends only i.e. 01 May to 31 October or by special arrangement.

Closed Christmas Day, New Year's Day and Good Friday.

Schools & Group Hours

Summer Season: Open Monday to Friday 10.30 – 3.30pm by prior arrangement (not on match days).

Winter Season: As above but by special arrangement.

Admission Charge

\$5 adults; \$2 students/children. Children (12 years & under) free if accompanied by an adult.

School groups \$1 per student and \$2 per adult.

Other group visits by arrangement.

Bookings

The museum welcomes school/group visits by prior arrangement. We appreciate at least two weeks notice to enable successful liaison with the Host/Guide and to ensure that you are able to book the most suitable times.

Note: The museum can comfortably accommodate 25 students and accompanying teachers and adults, split into two groups, at one time.

Phone: 04 385 6602 • Fax: 04 384 3498

Email: national.cricket.museum@paradise.net.nz

Website: www.nzcricket.co.nz

Basin Reserve Tours

Tours can be organised to the New Zealand Cricket Museum, the R.A. Vance Stand, the Groundsmen's Shed and the perimeter of the ground to view famous historical cricket plaques.

Facilities

Museum toilet including disabled toilet.

Bus & car parking adjacent to the museum.

Museum shop stocks a variety of books, postcards, miniature cricket bats, balls etc.

Lending Library

The library is available for lending, research and study purposes. Hours by arrangement.

How To Find Us

By Car: Drive in/enter by the southern (J.R. Reid) Gate at the Basin Reserve.

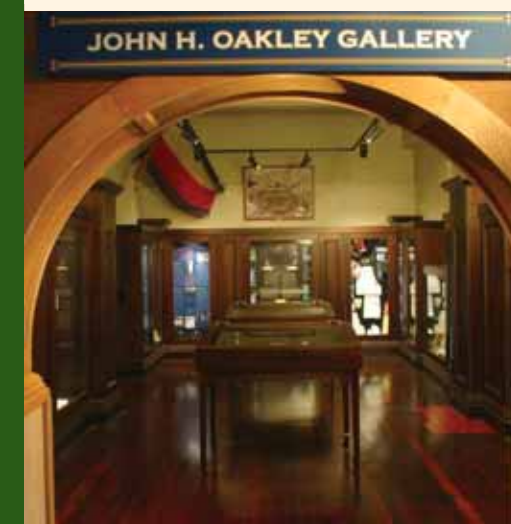
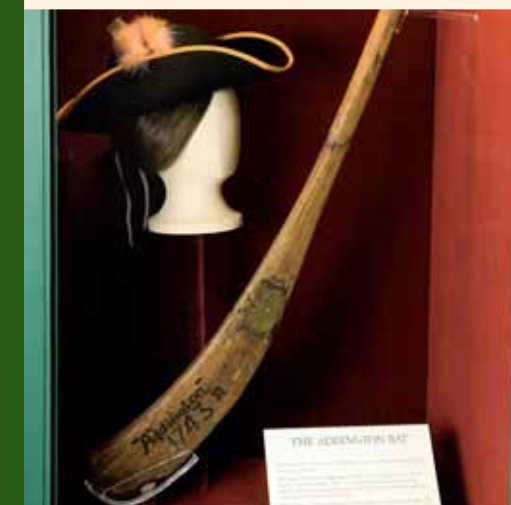
By Bus: Stagecoach Wellington. Buses 1, 42, 43, 44 travel to/from Kent & Cambridge Terrace to the Central Railway Station.

By Rail: NZ Tranz Metro units depart from the Central Railway Station.

By Foot: Enter the Basin by the northern or southern Gates and proceed to museum.

General

Smoking, food or drink are not permitted.



EXHIBITIONS / DISPLAYS

New Zealand Cricket – 1930's & 1940's Chronology

Commences 30 November 2006

This showcase display is the third in a series of New Zealand cricket chronologies which features highlights and lowlights of New Zealand cricket history and its development since the early 1840's until recent times. It follows upon the showcase displays of New Zealand cricket in the 1950's & 1960's and 1970's & 1980's installed over the last two years. These recent and new displays will then cover a continuous 60-year period.

The 1930's & 1940's display features a range of relevant collection objects such as photographs of cricketers' and teams from the two decades, bats with team signatures, a 1949 presentation plate, a 1949 scorecard, a 1931 menu, 1931 and 1937 postcards, a 1949 match ticket, programmes from the two decades, 1935 batting gloves, a 1949 blazer and tie etc. Also, text, labels, photo murals/strips and moving image archive material transferred to DVD of New Zealand test matches in those two decades.

It includes a unique film to DVD transfer of original moving image material shot by the New Zealand cricketer, Giff Vivian, on the 1931 New Zealand cricket tour of England. These images cover a wide range of subject matter directly related to a cricketers touring life of that era, including shipboard images and social events.

The design concept and brief is based on the earlier New Zealand cricket showcase displays noted above.

New Zealand Women's Team for New Zealand's First Official Test 1935
New Zealand v. England, Lancaster Park, Christchurch, 16, 18 February 1935
Unfortunately New Zealand were no match for the English, scoring only 44 and 122, against England's total of 503-5 declared. Thus England won by an innings and 337.

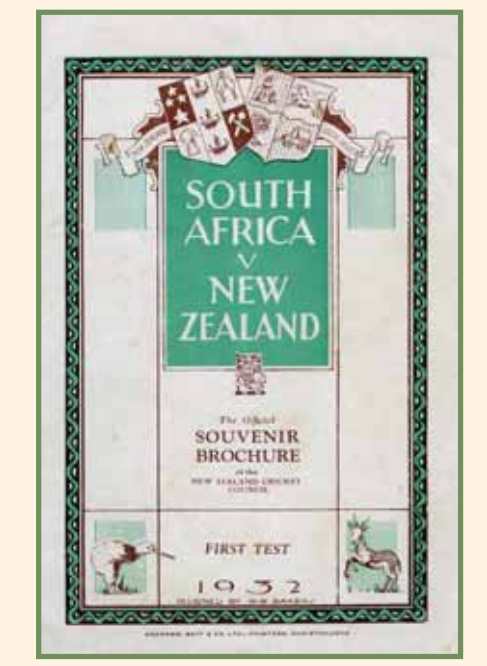
L. to R.: Hilda Buck, Mavis Corby, Agnes Eil, Margaret Marks, Nancy Browne, Pearl Savin, Helen Miller, Peggy Taylor, Marjorie Bishop, Merle Hollis, Ruth Symons (captain)
Photo: Unknown
Private Collection



Postcard
New Zealand Test Team 1937
Ephemera Collection, NZCM.
Accession No. 2005.9.3



Test Match Ticket, Tuesday 26th July 1949
England v. New Zealand (Third Test), Old Trafford,
England, 23, 25, 26 July 1949
Ephemera Collection, NZCM.
Accession No. 2005.37.4



Official Souvenir Brochure 1932 (1st Test)
South Africa v. New Zealand, Lancaster Park,
Christchurch, 27-29 Feb., 1 March 1932
Ephemera Collection, NZCM
Accession No. NCM 1283

