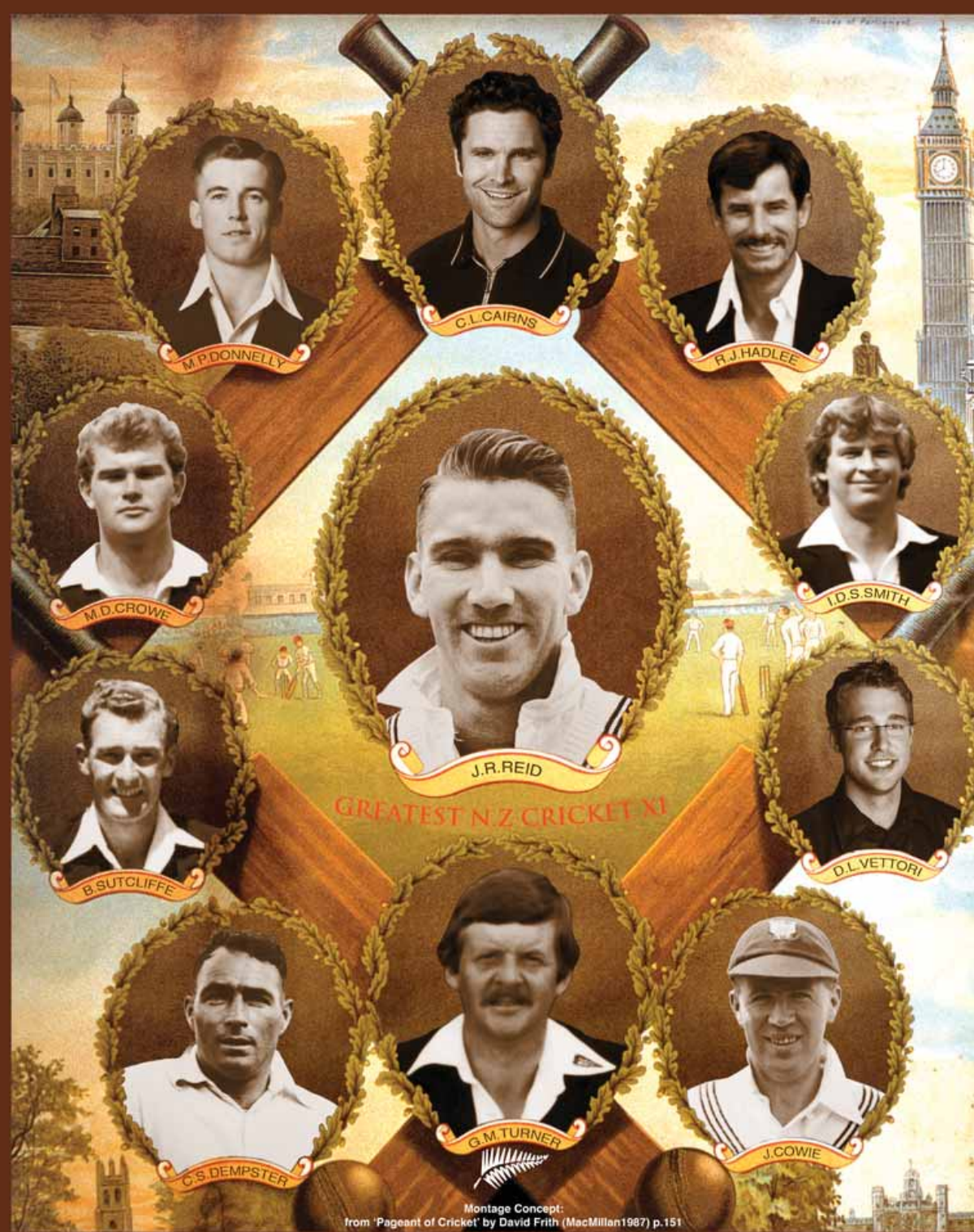


# NEW ZEALAND CRICKET MUSEUM



'The Greatest New Zealand Cricket XI' exhibition montage 2004  
Montage concept from Pageant of Cricket by David Frith (MacMillan 1987)

Winter / Spring Newsletter 2004

## EDUCATION

### Teacher Resource

The museum has recently produced a Teacher's Resource Workbook in partnership with the Wellington Museum's Trust. Compiled by Carolyn Patchett, Education Co-ordinator of the Museum of Wellington City and Sea, the resource has been prepared for Level 3, 4, and 5 students and is designed to encourage teachers and students to explore the world of cricket at the museum.

The 18 page workbook is being supplied free to schools with the intention of raising awareness of the New Zealand Cricket Museum as an education resource and to give teachers and students a taste of what is on offer at the museum.



'History of the Cricket Bat' Sample Work Sheet from the Teacher Resource  
Photo: Carolyn Patchett  
New Zealand Cricket Museum Archives



Museum Volunteer Michael Childs (right) taking an 'Historical Cricket Plaques' Tour of the Basin Reserve, New Zealand Cricket Museum Open Day 14.03.04  
Photo: Mark Coote  
Wellington Museums Trust Archives

The resource has direct curriculum links to Social Studies; Culture and Heritage; Technology: Technology and Society, Technological Capability; Mathematics: Statistics; English: Written Language, Visual Language, Oral Language; and Health and Physical Education: Healthy Communities and Environments.

The resource includes a number of sample worksheets and an integrated plan, plus a History of the Museum and its Aims & Objectives. Also, there is specific information about school group visiting hours, admission charges, bookings, Basin Reserve tours, museum facilities, plus location and transport information when planning a visit to the museum.

## VISITS TO THE MUSEUM

### The Old Grandstand, Basin Reserve, Wellington

#### Public Hours

**Summer Season:** 10.30 - 3.30pm Monday to Sunday and all match days i.e. 01 November to 30 April.

**Winter Season:** 10.30 - 3.30pm Weekends only i.e. 01 May to 31 October or by special arrangement.

Closed Christmas Day, New Year's Day and Good Friday.

#### Schools & Group Hours

**Summer Season:** Open Mon. - Fri. 10.30 - 3.30pm by prior arrangement (not on match days).

**Winter Season:** As above but by special arrangement.

#### Admission Charge

\$5 adults; \$2 students/children. Children (12 years & under) free if accompanied by an adult.

School groups \$1per student and \$2 per adult.

Other group visits by arrangement.

#### Bookings

The museum welcomes school/group visits by prior arrangement. We appreciate at least two weeks notice to enable successful liaison time with the Host/Guide and to ensure that you are able to book the most suitable times.

**Note:** The museum can comfortably accommodate 25 students and accompanying teachers and adults, split into two groups, at one time.

Phone: 04 385 6602 • Fax: 04 384 3498

Email: [national.cricket.museum@paradise.net.nz](mailto:national.cricket.museum@paradise.net.nz)

Website: [www.wellingtonmuseumstrust.org.nz](http://www.wellingtonmuseumstrust.org.nz)

#### Basin Reserve Tours

Tours can be organised to the New Zealand Cricket Museum, the R.A. Vance Stand, the Groundsmen's Shed and the perimeter of the ground to view famous historical cricket plaques.

#### Facilities

Museum toilet including disabled toilet.

Bus & car parking adjacent to the museum.

Museum shop stocks a variety of books, postcards, miniature cricket bats, balls etc.

#### Library

The library is available for research and study purposes. Hours by arrangement.

#### How To Find Us

**By Car:** Drive in/enter by the southern (J.R. Reid) Gate at the Basin Reserve.

**By Bus:** Stagecoach Wellington. Buses 1, 42, 43, 44 travel to/from Kent & Cambridge Terrace to the Central Railway Station.

**By Rail:** NZ Tranz Metro units depart from the Central Railway Station.  
**By Foot:** Enter the Basin by the northern or southern Gates & proceed to museum.

#### General

Smoking, food or drink are not permitted.

## EXHIBITIONS

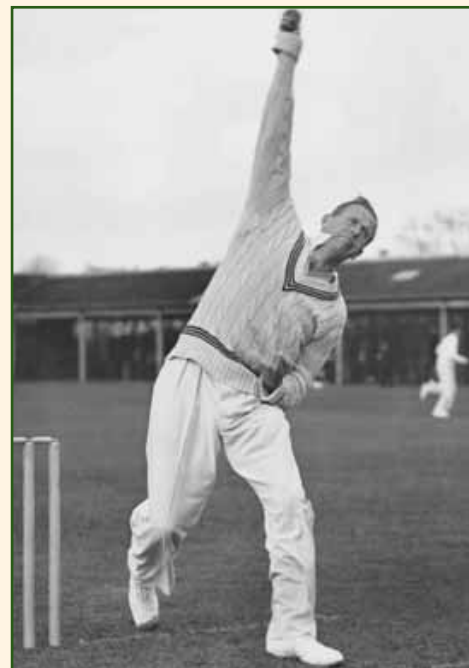
### 'The Greatest New Zealand Cricket XI'

Commenced 17 March 2004

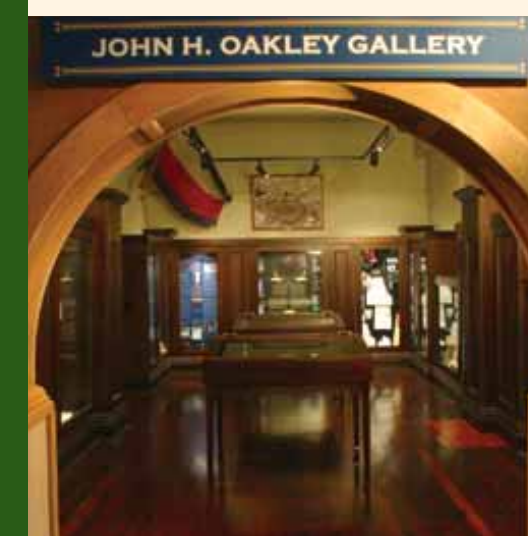
This exhibition of New Zealand cricket greats features a selected XI (see exhibition montage on front cover of newsletter) chosen from a short-list of 60 players, by two ex-national convenors of selectors Don Neely and Frank Cameron, and Gavin Larsen, the ex-test and one-day cricketer.

The idea for the exhibition followed the model of the successful 'The Greatest All Black Team' project run by the Sunday Star Times in July 2003, in which readers were invited to chose their greatest All Black XV and match that against a selection made by an expert panel. The museum worked with the newspaper to develop a similar competition over three weeks in February. The exhibition of the selectors' chosen team was the final outcome of the project. The competition resulted in 2,000 entries, of which 54 respondents selected the correct XI.

In selecting any 'best' team, there is an acknowledgement that each generation of cricketers' perform under a wide and differing set of circumstances and therefore it is very difficult to compare like with like. The exhibition is designed to encourage discussion and debate about New Zealand test cricket and cricketers', as well as to raise awareness of the museum and it's role in stimulating an understanding of New Zealand cricket, it's history and relevance to our society.



John (Jack) Cowie 1949  
'Greatest New Zealand Cricket XI' Exhibition  
Photo: Sport & General Private Collection



l to r: David Mealing (Manager/Curator, NZ Cricket Museum), Don Neely (Chairman, NZ Cricket Museum Trust Board) & Martin Snedden (C.E.O., NZ Cricket) 27.03.04  
'Greatest New Zealand Cricket XI' Exhibition Opening, New Zealand Cricket Museum  
Photo: J.R. Reid  
New Zealand Cricket Museum Archives

Also Showing (since December 2003)

**Vintage Cricketer of the Year** – Bevan Congdon

**Highlights of Test Matches** – NZ v Pakistan; NZ v South Africa

**Forthcoming Display**

**New Zealand Cricket** – 1950's & 1960's Chronology

## COLLECTION MANAGEMENT

### New Acquisitions 2004

During the latter half of 2003 and the first half of 2004 the museum has received many wonderful treasures from a number of donors into its collection.



Among them is a particularly delightful signature tie depicting Danny Morrison as 'Donald Duck.' The image is repeated many times, alternately wearing a New Zealand cap and helmet and carrying a bat. Made in New Zealand by Eskay in 1996 of 100% polyester, the tie was produced for Danny Morrison's testimonial year and was designed to 'celebrate' his then world record number of ducks in test cricket.

Danny Morrison 'Donald Duck' Tie 1996  
Collection: Costumes & Textiles, New Zealand Cricket Museum  
Accession No: 2004.11.1

Other gifts included photographs, books, blazers, caps, ephemera items (cricket programmes, booklets, tour menus, etc), plus a significant number of items produced by New Zealand Cricket for marketing, publicity and promotional purposes e.g. posters, player cards, profile cards, postcards, stationery folder, calendar, stickers, etc.



The Cricket Writers' Club Dinner Menu in Honour of the New Zealand Cricket Team 1958  
Collection: Ephemera, New Zealand Cricket Museum  
Accession No: 2004. 9.9

A significant number of treasures were also gifted to the museum from a private collection. These items date from 1958 to 1996 and apart from a menu relating to the New Zealand cricket team's tour of England in 1958, all the other treasures are related to ex-New Zealand cricketer Bob Blair's career in Australia, South Africa, Zimbabwe and England.

Also, a cricket ball with a silver-plated strip around the seam detailing the following information: "England v New Zealand, March 1907 – To H. D. Bell Esq. With compliments from the members of the New Zealand Team" has been gifted to the museum (Mr. Bell was President of Wellington Cricket Association at the time).

It's hoped that even more treasures like those pictured will come into our collection for the future enjoyment of visitors!



Official Souvenir & Scoring Book 1902-03  
Lord Hawke's English Cricket Team in New Zealand  
Collection: Ephemera, New Zealand Cricket Museum  
Accession No: 2003/237



'White Ferns' Postcard 2000/01  
Collection: Ephemera, New Zealand Cricket Museum  
Accession No: 2004.7.5

## NEW ZEALAND CRICKET HISTORY

### Formation of the First-Class Associations

The following histories of the formation of the Wellington Cricket Association – formed 1875 – and the Otago Cricket Association – formed 1876 – are the first in a series that the museum plans to incorporate, in a chronological manner, in future newsletters. It is proposed that the formation of the Canterbury (1877) and Auckland (1883) Cricket Associations will follow in the Summer/Autumn Newsletter 2004/05 and Central Districts (1950/51) and Northern Districts (1953) in the Winter/Spring Newsletter 2005. This process will eventually be extended in the future to cover the Minor Associations.



Cricket Match in Progress at Carisbrook, Dunedin c.1925  
Photographer: Unknown  
Photography Collection, New Zealand Cricket Museum  
Accession No: 03/142

### Otago Cricket Association

While the Otago Cricket Association was not founded until 1876, cricket in Dunedin was played as early as 1848, the Dunedin Club being formed in 1849 and a match played on New Year's Day on the site of the present Octagon between married and single men which resulted in a win for the single men (39 and 15 for 1 wicket), married men (24 and 20).

For the next decade interest died away, but coinciding with the gold rush, spasmodic cricket was played at the Oval and in 1861 a Dunedin team journeyed to Outram, where they suffered an unexpected defeat.

The Association was formed at a meeting held at Wain's Hotel on the 29th of July 1876, the first president being a distinguished pioneer, W.D. Murison, the vice-presidents Messrs W.D. Meares and J Rattray and the secretary and treasurer Mr. D.O. Eva.

It is interesting to note that at the second annual meeting held 14 months later, ground membership stood at 71 and the following year it had risen to 88 - quite remarkable when the figure when last published in 2001 was 65!

Business conducted at those early annual meetings appears to have been routine, although at the seventh in 1882, the Dunedin Club wrote refusing to pay the one shilling per head levy imposed on players participating in a cup match against Carisbrook, stating that "it considered the one shilling collection business a farce".

Distinguished names appear in the list of Presidents thereafter, including the famous jurist A.C. Hanlon from 1898 to 1905 inclusive. Nothing in New Zealand could equal the record of E.S. (Ernie) Wilson, however. Appointed secretary in 1903, he retired in 1953!

Source: Material supplied by Iain W. Galloway, Dunedin

Lieutenant Colonel Edward Pearce  
The 1st Patron & President of the Wellington Cricketers' Association  
Photographer & Date: Unknown & ca.1880's  
G E Pearce Collection, Alexander Turnbull Library, Wellington, N.Z.  
(Ref.F-44028-1/2)

### Wellington Cricket Association

The first general meeting of the Wellington Cricket Association was held at the Pier Hotel on the 22nd October 1875. The following local clubs formally enrolled themselves in the Association: Wellington Cricket Club; Star Cricket Club; Victoria Cricket Club; The A.C.C.; The Colt Cricket Club; College Cricket Club and The Legal Cricket Club.

It was resolved that a subscription of 3 guineas per annum should be paid by each club to the funds of the Association and also a fee of 11/- for each match played on the Basin Reserve during the season. It was announced –

1. that a man had been engaged to be employed permanently on the Basin Reserve at 7/- per day to put and keep the ground in proper order.
2. The sum of 11 pounds was already in hand for that purpose being the proceeds of the College Sports.
3. A soiree was to be given in the Oddfellows Hall on the evening of the Prince of Wales birthday from which the proceeds would be devoted to the same purpose.

At the next meeting, the Committee of the Association was elected, and it was decided that each club should have its own separate wicket for practice. The main two objectives were to form a cricket association that would control the game in Wellington and also arrange and select the teams to play in representative games. The second objective was to form one voice from all the clubs to speak on the players' behalf with the Council in the search for grounds. It was also resolved that Lieutenant Colonel Edward Pearce be asked to become the first Patron and President of the Association.

Source: '100 Summers – The History of Wellington Cricket' by Don Neely, Moa Publications, pgs 21,22



## BRIEFLY

### Welcome to our 1st Newsletter

This is the first newsletter produced by the New Zealand Cricket Museum. We plan to produce two a year i.e. a Winter/Spring & Summer/Autumn newsletter. The format and layout in future will be consistent with this newsletter, covering the main aspects of the museum's operation, and historical information about the history and development of New Zealand cricket – nation-wide.

### Overview

The past 15 months have seen significant and far-reaching developments in the history of the museum. Firstly, on the 31st of March 2003 the name of the National Cricket Museum was officially changed to the New Zealand Cricket Museum to reflect its association with New Zealand Cricket. Secondly, a new joint management agreement was established in August 2003, between the New Zealand Cricket Museum Trust and the Wellington Museum's Trust, who have been contracted to manage the museum on its behalf. The first full-time paid Manager was appointed in August 2003. Thirdly, funding from New Zealand Cricket and the National Bank was secured through to 2011.

### Management Framework

Establishing the museum on a professional basis has necessitated the introduction of a Business Plan; Policy Manual; Marketing Plan; 5 Year Strategic Plan 2004 – 2008; and also an Induction, Operational and Training Manual for Staff and Custodians. These critical documents, plus a number of forms and procedures, now form the basis for a clearly defined and enunciated programme of development of the museum into the future.

### Upgrading Interior Museum Spaces

A number of outstanding issues were addressed in 2003 to upgrade the museum to meet statutory and safety requirements, enhance environmental conditions, and improve the main gallery spaces. This included the installation of emergency lighting and track lighting; the installation of new protective window film; the installation of new display cabinet tube lighting with protection sleeves; a repainted section of the main gallery ceiling; plus servicing the air conditioning unit to stabilise temperature and humidity levels.

### Marketing

The museum has produced a new brochure and completed the first museum Annual Visitor Survey (March-April 04) with a 98% visitor satisfaction rating. It has also received encouraging levels of media exposure and photo opportunities, some of these with the support of the Wellington Museum's Trust, particularly the Open Day on the 14th of March 2004.

### "Vibrant Gold" Award

The Wellington Museums Trust – which includes the New Zealand Cricket Museum – came home a winner from the recent Wellington Region Gold Awards. The annual Gold Awards, which are presented in association with The Dominion Post, celebrate enterprise and excellence in business.

