

NEW ZEALAND CRICKET MUSEUM



'On Tour' Showcase Display
Photographer: Mark Coote
NZCM Archives

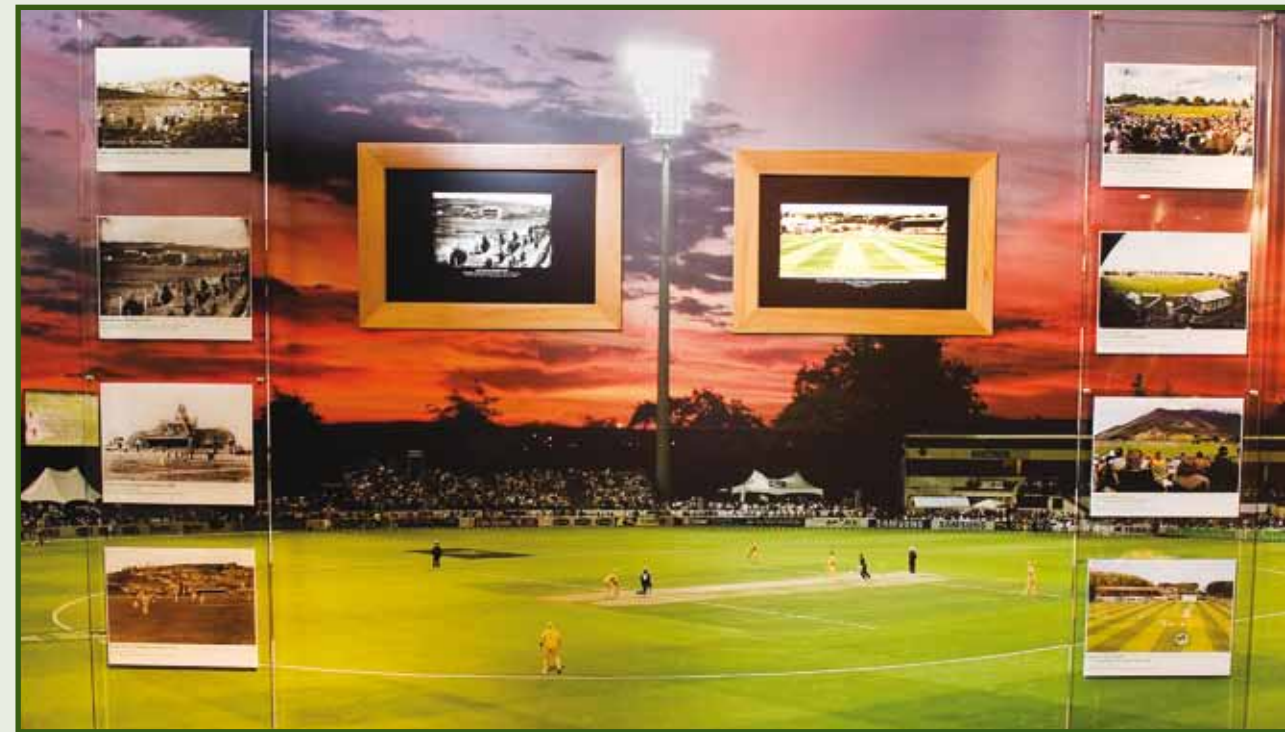
EDUCATION

Annual Survey Results 2008/09

The Annual Survey results were extremely pleasing, and achieved new benchmarks in terms of visitor's appraisal of the museum. There was a 100% visitor satisfaction rating (46% excellent, 47% very good, 7% good); and the Overall Quality 'excellent' rating moved up from 68% to 78% from the previous year (100% in total, as 22% regarded the overall quality as good).

The survey results reveal that 69% of our visitors are from overseas, particularly England (45%). These visitors rate the museum very highly, and compare it more than favourably to other overseas cricket museums. The education/research value of exhibitions was rated as excellent or good by 94% of visitors surveyed in the Annual Survey (up 1%).

Note: there were 100 survey forms completed from 455 visitors in the period surveyed. This represented a 21.97% response rate.



'New Zealand Cricket Grounds' Display – Photographer: Mark Coote – NZCM Archives

VISITS TO THE MUSEUM

The Old Grandstand, Basin Reserve, Wellington

Public Hours

Summer Season: 10.30 – 3.30pm Monday to Sunday and all match days i.e. 01 November to 30 April.

Winter Season: 10.30 – 3.30pm Weekends only i.e. 01 May to 31 October or by special arrangement.

Schools & Group Hours

Summer Season: Open Monday to Friday 10.30 – 3.30pm by prior arrangement (not match days).

Winter Season: As above but by special arrangement.

Admission Charges

\$5 adults; \$2 students/children. Children (12 years & under) free if accompanied by an adult.

School groups \$1 per student and \$2 per adult.

Other group visits by arrangement.

Bookings

The museum welcomes school/group visits by prior arrangement. We appreciate at least two weeks notice to enable successful liaison time with the Host/Guide and to ensure that you are able to book the most suitable times.

Note: The museum can comfortably accommodate 25 students and accompanying teachers and adults, split into two groups, at one time.

Phone: 04 385 6602

Email: cricket@wmt.org.nz

Website: www.nzcricket.co.nz

Basin Reserve Tours

Tours can be organised to the New Zealand Cricket Museum, the R.A. Vance Stand, the Groundsmen's Shed and the perimeter of the ground to view famous historical cricket plaques.

Facilities

Museum toilet including disabled toilet.

Bus & car parking adjacent to the museum.

Museum shop stocks a variety of books, postcards, miniature cricket bats, balls etc.

Lending Library

The library is available for lending, research and study purposes. Hours by arrangement. A cornucopia of cricket history.

How To Find Us

By Car: Drive in/enter by the southern (J.R. Reid) Gate at the Basin Reserve.

By Bus: Stagecoach Wellington. Buses 1, 42, 43, 44 travel to/from Kent and Cambridge Terrace to the Central Railway Station.

By Rail: NZ Tranz Metro units depart from the Central Railway Station.

By Foot: Enter the Basin by the northern or southern Gates and proceed to museum.

General

Smoking, food or drink are not permitted.

EXHIBITION / DISPLAYS

New Zealand Cricket in the 19th Century

Commences 23.11.2009

This showcase display looks at the early history of cricket in New Zealand. The first record of the game in New Zealand appears in the diary of Archdeacon Williams in 1832. Cricket grew slowly in the isolated main settlements because transport and communications were primitive. The game received a boost with visits from All England XI's in 1864 (Parr) and 1877 (Lillywhite); and Australian teams in 1878 and 1881.



The First Official New Zealand Cricket Team which played New South Wales Lancaster Park, Christchurch, 15, 16, 17 February 1894 – NZ lost by 160 runs

Standing: A.M. Ollivier (selector), I. Mills, H.S. De Maus, J.C. Lawton, T.D. Condell (umpire), W.H. Wynn-Williams (Canterbury Cricket Association President)

Seated: R.W. Barry (scorer), J.D. Lawrence, A.R. Holdship, L.A. Cuff (captain), J.N. Fowke, C. St G. Gore

In front: A.B.M. Labatt, E.V. Palmer, W. Robertson

Photographer: Standish Preece
New Zealand Cricket Collection

First-class associations were formed in the larger centres beginning with Wellington (1875), followed by Otago (1876), Canterbury (1877), and Auckland (1883). By this time cricket had assumed an important place in the social history of the expanding colony. In 1878-79 Canterbury became the first New Zealand team to tour abroad when they visited Victoria and Tasmania.



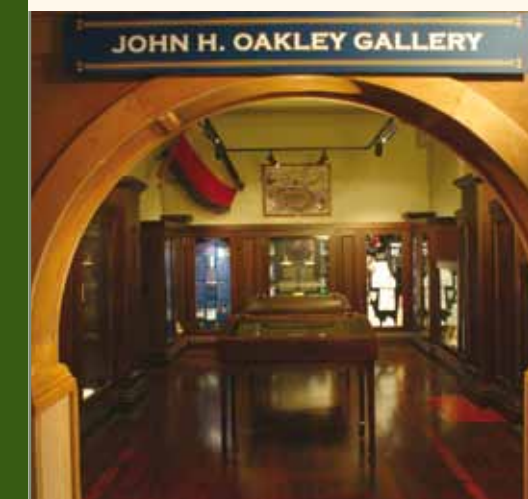
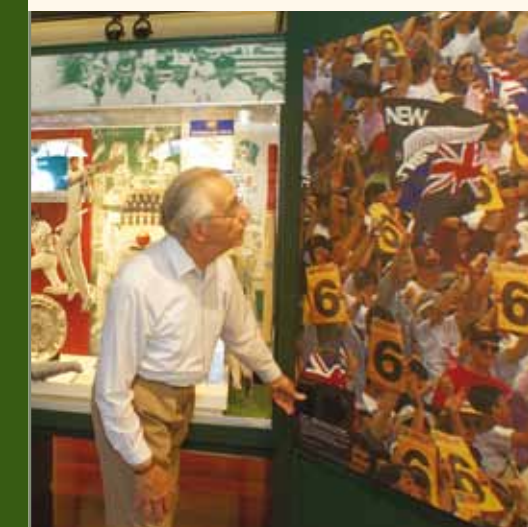
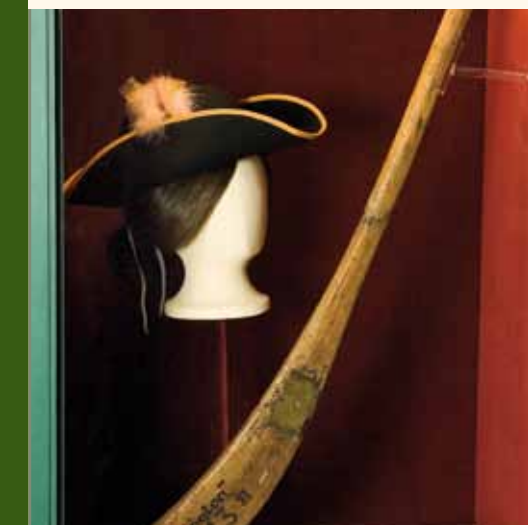
New South Wales v Canterbury 1895
Lancaster Park, Christchurch

Photographer: Joseph Kinsey
J.J. Kinsey Collection, Canterbury Museum
Ref.No.1940.193.14

Inter-provincial rivalry was generated in challenges, and apart from the 1st-Class Associations, Hawkes Bay, Nelson, Taranaki and Southland played with increasing frequency. Inevitably, there was a need for a controlling body, and this came into being with the establishment of the New Zealand Cricket Council, at a meeting in Christchurch in December 1894, where it has always been located.

The English side visited in 1882 and 1888, Tasmania in 1884, Australia in 1886, and New South Wales in 1890 and 1894. The Canterbury Cricket Association was responsible for the organisation of the touring New South Wales side that played against New Zealand in 1894 – New Zealand's first international game. To help defray expenses the tourists gave a concert after the first day's play.

The Fijians made their first visit in 1895 and later the same year New South Wales toured; Australian and Queensland sides arrived in 1896. In 1898-99 New Zealand toured Australia. The NZCC was in such a poor financial position that the team members were asked to provide their own jackets and the ferns on the caps were individually sown on – all were different.



COLLECTION MANAGEMENT

Recent Acquisition of Cricketana Treasures

The museum recently acquired 14 x 19th Century and 4 x 20th Century cricketana treasures from an English cricket dealer. Many of these items are rare and represent a significant purchase for the museum. Treasures similar, or identical to these, would most likely have been brought to New Zealand by English immigrants. They are diverse in nature and content, but collectively present a wonderful resource for planned present and future showcase displays. The 19th Century items will all be included in the New Zealand Cricket in the 19th Century showcase display.

A number of these treasures are highlighted on this page, but in total they include bisque figures; Doulton Lambeth stoneware jugs (including one featuring an 'Art Nouveau' design), tobacco jar, and tyg (a three, or more handled, drinking mug, or loving cup); a Royal Doulton china plate; Staffordshire Ware china mugs, china bowl, and a tile; a Westerwald 'Arts and Crafts' stoneware jug; Royal Grafton china plates; belt buckles; a confectionery tin; and a toast rack! All these items have direct cricket references, whether it is from the Ceramics & Sculpture Collection, the Ornamental Objects Collection, or the Ephemera Collection.



1. Doulton Lambeth Stoneware 'Art Nouveau' Jug c.1890's
Ceramics & Sculpture Collection
NZCM Accession No. 2009.75.3
2. Doulton Lambeth Stoneware Tobacco Jar c.1880
Ceramics & Sculpture Collection
NZCM Accession No. 2009.75.5
3. Westerwald Stoneware 'Arts & Crafts' styled Jug c.1880's
Ceramics & Sculpture Collection
NZCM Accession No. 2009.75.13
4. Doulton Lambeth Stoneware Tyg c.1881
Ceramics & Sculpture Collection
NZCM Accession No. 2009.75.6
5. Staffordshire Ware China Bowl c.1860
Ceramics & Sculpture Collection
NZCM Accession No. 2009.75.6
6. Staffordshire Ware China Mug c.1860
Ceramics & Sculpture Collection
NZCM Accession No. 2009.75.11
7. Royal Doulton Bone China Plate c.1920
Ceramics & Sculpture Collection
NZCM Accession No. 2009.75.14

NEW ZEALAND CRICKET HISTORY

Parr's All England XI New Zealand Tour 1864

Shadrach, W.G. Grace, 'The Coroner', & King Wakatip

The entrepreneur Shadrach Jones financed and brought to Dunedin in early 1864, the All England XI, then touring Australia. To ensure that the festival of cricket was a success, a grandstand was built, and the oval established and fenced at the Southern Recreation Ground. His team of local players had to have practice, so Otago arranged to play Southland for the first time on 23 January 1864, and Canterbury on the 27 January 1864. The latter was the first game between these two provinces. For many days Dunedin was *en fete*.



Southern Recreation Ground 1864 (detail with cricket match in progress)
Watercolour Painting, *Dunedin from southern Cemetery* by George O'Brien
Otago Settlers Museum, Ref.No. 1988/78/1

		Results of Tour					Averages (All England XI)						
Opponents	Place	All	England	Opponents	Results	Ins.	N.O	H.S	TL	Ag.	Bowling	Wickets	Average
Otago	Dunedin	99	58 for 1	71	83	England won by 9							
Canterbury/Otago	Dunedin	73		91	66	Drawn							
Canterbury	Christchurch	137		30	105	Eng. won by inns. & 2							
Otago	Dunedin	198		98	49	Eng. won by inns. & 51							

Opponents	Batting		Bowling		
	Ins.	N.O	Approx. runs	Wickets	Average
Grace, E.M	5	1	42	102	25.5
Hayward, T.	4	1	40	59	19.6
Tarrant, C.	5	1	26	69	17.2
Jackson, J.	5	3	16	31	15.5
Caffyn, W.	4	0	43	60	15.0
Lockyer, T.	4	0	24	57	14.2
Carpenter, A.	4	0	23	47	11.7
Clarke, A.	4	0	17	33	8.2
Parr, G.	3	0	17	22	7.3
Caesar, J.	3	0	21	22	7.3
Tinley, R.C.	4	0	14	26	6.5
Anderson, G.	2	0	2	2	1

Note: At the conclusion of the game against Canterbury in Christchurch on the 8th and 9th of February 1864, an additional mixed-side's match was played with 11 players per side. Parr's XI defeated Anderson's XI by 7 runs. Also, Grace and Tarrant played an Eleven of Otago at Dunedin on the 15th of February. Grace and Tarrant scored 16 and Otago were dismissed for 7.

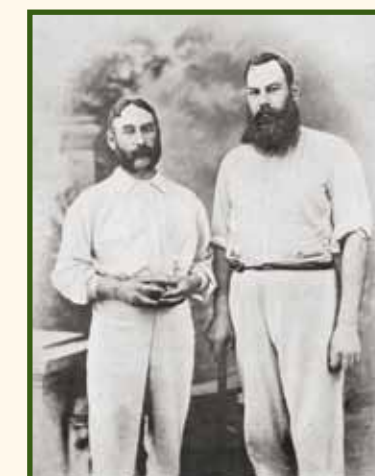


The Otago & Canterbury Teams pose on the veranda of the Pavilion, The Oval, Southern Recreation Ground, Dunedin, 4 or 5 February 1864
Photograph: The Weekly Press, published 05 March 1913, pg 42
Bishop Collection, Canterbury Museum, Ref. No. 1923.53.297

Although Otago and Canterbury were the only provinces visited, much enthusiasm was aroused, and a decided impetus given to the game. Only one amateur was in the team, E.M. 'The Coroner' Grace, an elder brother of W.G. Grace. The professionals were G. Parr (captain), R.C. Tinley and R. Clarke (Notts), W. Caffyn, Julius Caesar, J. Jackson, T. Lockyer (Surrey), T. Hayward, G. Tarrant, R. Carpenter (Cambridgeshire), and G. Anderson (Yorkshire). E.M. Grace was the star of the team. He was only 22 years of age, but already at the height of his powers. He topped the batting averages for the tour, and in the field was quite fearless, taking all sorts of risks in the position of silly point.

Only four matches were played; two against Otago, and a combined Canterbury-Otago team in Dunedin, and one against Canterbury at Christchurch. The combined team drew their game, but the other three were won easily by the visitors. All of the local teams comprised 22 players.

The visitors found the wickets very dead. The Oval in Dunedin had only just been put in order, and Hagley Park at that time was little better. Grace commented in his tour diary in the match against an Otago XXII on the 2nd of February that "the Dunedin Cricket Club is on a deep swamp. A foot of heavy clay was placed on the swampy surface, and the turf was laid upon the clay, and, considering that it has only been made three months, it is very good. The ground is level, but, owing to the spongy swamp beneath, it literally trembles at every step". The under-prepared and lifeless pitches assisted the English bowlers, particularly Tinley, the slow break bowler, who along with Hayward, and Jackson, reaped rich harvests.



E.M. Grace (left) & W.G. Grace c. 1875

Photographer: Hawkins, Brighton, England
Source: 'WG-Cricketing Reminiscences' by W.G. Grace 1899



William Gilbert Rees July 1853

Self-portrait at Stonehenge, Darling Downs, Australia
Pencil and watercolour drawing
Alexander Turnbull Library Wellington, N.Z. Ref.No.E-199-q-03



'Grand Cricket Match', Hagley Oval, Christchurch, 8-9 February 1864

Photograph by: Frederick Nelson Jones of a lithograph - Artist Unknown
The original caption reads: 'All England II v 22 of Canterbury, N. Zealand'
Alexander Turnbull Library, Wellington, N.Z. Ref. No. G-28957-1/2

Low scores for all the teams were also a consequence, with Caffyn's 43 in Dunedin being the highest score of the tour.

The Otago XXII included William Gilbert Rees, who was not only an explorer, pioneer, run-holder, and founder of Queenstown, but also a cousin and god-father of William Gilbert Grace, the greatest English cricketer of all time. Rees learned his cricket at the Royal Naval School. In the three-day match against Otago, E.M. Grace top-scored before his cousin caught him, while Rees made 6 and 0.

E.M. (Teddy) Grace reported on the final match in Dunedin: "We won the toss and went in. I could not play at all. I put it down to the sea voyage (i.e. the coastal trip to Christchurch and return). Very unfortunately William did not get many runs, but he fielded beautifully, quite in his old style. It is quite a treat to watch him and he is so good and kind, everybody likes him and calls him "King Wakatip".

Sources: *New Zealand Cricket 1841-1914* by T.W. Reese, pgs 76,77,149-153; *W.G. Rees and his Cricketing Cousins, No.3*, by G.J. Griffiths, pgs. 27, 28 published by G.J. Griffiths 1971; *John Wisden's Cricketers' Almanack for 1865*, pgs 140-144; *The Summer Game* by D.O. & P.W. Neely, pgs 13, 15 published by Moa Publications 1986

BRIEFLY

Marketing

The museum was featured on Mumbai and Kolkata television prior, and during, the New Zealand v India Test Match at the Basin Reserve in April, as well as being featured in an article written by Indian cricket journalist Sidharth Monga for www.cricinfo.com.

Income Targets Exceeded for 2008/09

Income targets for admissions and shop sales were exceeded for the financial year - \$15,727.50 as opposed to the budgeted figure of \$10,500.00 - and this, along with negotiated discounts from our suppliers, has resulted in surplus funds for the second financial year in a row. This surplus will be partly transferred to Reserve Funds, with the balance transferred to the museums Acquisitions budget to help purchase the 18 rare cricketana treasures.

The Top 100 Cricketers of all Time

The well known BBC Test Match Special cricket commentator and writer, Christopher Martin-Jenkins has recently published a book on his top 100 cricketers of all time, with the above title. Don Bradman was the obvious choice for Number 1, but of interest is his decision to include only two New Zealand cricketers. Richard Hadlee is listed at number 25, and Martin Donnelly at 73. Curiously, there was no place for Stewie Dempster, Bert Sutcliffe, John Reid, Glenn Turner, and Martin Crowe.

Women's Twenty20 World Cup

The ICC recently chose the women's team of the tournament for the ICC Twenty20 World Cup 2009. The team was chosen by a select group of experts on the basis of performances in the tournament. Statistics were used but were not the sole basis for selections. Four from beaten finalists New Zealand were chosen in that elite group - Aimee Watkins, Suzie Bates, Lucy Doolan, and Sian Ruck. The English player Claire Taylor, just tipped New Zealand captain Aimee Watkins, as women's player of the tournament.



Aimee Watkins

Photographer: Photosport
New Zealand Cricket Archives



Wellington
MUSEUMS TRUST



Pub Charity

The National Bank
The thoroughbred among banks